

# FORMA

EUROPEAN HERITAGE

**F 45**  
4WD TRACTOR

**F Series**  
RELIABLE • DEPENDABLE • EFFICIENT



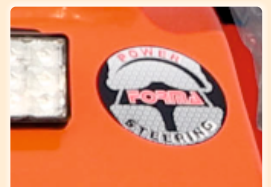
Connected Tractor



Projector Headlamps



LED Lights



Power Steering

# Technical Specifications

# F45

Standard Features	2WD	4WD
<b>Engine</b>		
Engine Model	A45 (Cold Start Kit Optional)	
HP / kW	45 / 33.1	
No. of Cylinders	3	
Fuel System	Inline Fuel Injection Pump	
Bore/Stroke (mm)	105/110	
Cubic Capacity (cc)	2858	
Rated RPM	2000	
Air Cleaner	Dry Air Cleaner with Clogging Sensor	
Max Torque (Nm @ RPM)	185 @ 1200	
<b>TRANSMISSION</b>		
Drive	2WD	4WD
Clutch	Single, Dual Clutch Optional	
Gearbox	8F+2R	
Transmission Type	Sliding Mesh	
MFD Engagement	Mechanical Engagement	
<b>Axle</b>		
Front	2WD or MFD with limited slip	
<b>PTO</b>		
PTO (actuation)	Mechanically actuated, Hand operated	
PTO Speed	540 rpm	
PTO (HP)	42.16	
<b>Differential Lock</b>		
Differential Lock (mechanical)	Optional	
<b>Electrical</b>		
Battery (V, Ah)	12, 88	
Alternator (V, A)	12, 42	
Trailer Socket	Yes, Seven Pin (Round)	
<b>Steering</b>		
Steering	Mechanical / Power	
<b>Tyre</b>		
Front	6.00-16	8.00-18
Rear	13.6x 28 (14.9x28 optional)	
<b>Speed Forward</b>		
Max Speed (Km/h)	31.9@2000rpm (speed with 13.6x28 tyre)	
Min Speed (Km/h)	2.51@2000rpm (speed with 13.6x28 tyre)	
<b>Brakes</b>		
Brakes	Dry Disc Brakes/Oil Immersed Brakes	
Type of Actuation	Mechanically actuated	
Hand Brake	Yes, Pawl and Ratchet Type	

Standard Features	2WD	4WD
<b>Hydraulics</b>		
System Type	Open Center	
3 Point Linkage	CAT II	
No. of Rear Remotes	2	
Auxiliary Hydraulic Circuit	1SA+1DA	
Hydraulic Lifting Capacity (kg) hitch point.	1800	
Hydraulic Pump (lpm)	38	
<b>Others</b>		
Trailer Hitch	Optional (Fixed Type)	
Driver Seat	Horizontally adjustable seat with SMV emblem.	
Fuel Indicator Gauge	Yes	
Front Tow Hook	Yes	
Draft Sensing or Lift Control	Top Linking Sensing	
<b>Weight</b>		
Front Weight	2WD/4WD	
<b>Capacity (L)</b>		
Fuel Tank	55	
Mechanical /Power Steering System	0.8	2.75
Engine Oil	7	
Hydraulic+Transmission	51 (with Dry Disc brakes)	53 (with Oil immersed brakes)
<b>Dimension &amp; Weight</b>		
Wheel Base (mm)	1960	2060
Overall Length (mm)	3660	3740
Overall Height (mm)	2300 (Upto exhaust pipe)	
Ground Clearance (mm)	425	370
Total Weight	1950	2170
Front Track, (mm), min-max	1250(std) -1485	1290
Rear Track, (mm), min-max	1365 -1880	
<b>Turning Diameter</b>		
With Brakes (mm)	6.40 (R)-6.76 (L)	8.60 (R)-8.75 (L)
Without Brakes (mm)	7.12 (R)-7.21 (L)	9.40 (R)-9.65 (L)
<b>Special Features</b>		
Smart Eye System	Yes	
Projector Lamp	Yes	

# FORMA

## MARKETING H.Q.

Plot No. 7, 2nd Floor, L.S.C., Pocket - H Market,  
Sarita Vihar, New Delhi - 110076 India  
Phone: +91 9205687887  
E-mail: info@forma-international.com

Authorised Dealer :

