

# FE 210

## Nextgen Pick n Carry Mobile Crane

Unleashing Power,  
Precision & Performance

**4x4**  
All Terrain Capability



**Front  
Outrigger**

For Working Stability



**Pick &  
Carry**

Efficient Load movement



**Rough Terrain  
Articulated**

Engineered for harsh job sites

**4x4  
All Wheel Drive**

Superior traction & mobility

## BUILT FOR DEMANDING ENVIRONMENTS.

Designed to conquer the toughest job sites, the **FE 210** delivers unmatched versatility and durability to maximize your operational efficiency in any terrain.

QR Code

# Specifications

# FE-210

<b>LIFTING CAPACITY</b>	20 Tonnes	<b>HOIST</b>	3.5 Tonnes Line Pull Winch is driven by hydraulic motor and fitted with rope tensioner. Hoisting is provided through self adjusting hook block employing 6 falls of 13mm dia. Rope.
<b>ENGINE</b>	TATA 101HP, BS-III, 4 Cylinder, Water Cooled Diesel Engine	Hoist Speed	35 Mtrs./Min (Line Speed)
Rated Power	101 hp at 2200 RPM	<b>ELECTRICAL SYSTEM</b>	24v, Negative earth.
<b>TRANSMISSION</b>	Heavy duty, synchromesh with 8 forward and 2 reverse speeds and hi-low drive selector for creep speed	<b>TYRES</b>	
Axles	Front axle is rigidly mounted on the chassis. Rear drive axle is mounted with 2 nos. Leaf springs.	Front	12.00x20-18 PR (4 NOS.)
Drive	2 / 4 Wheel drive.	Rear	12.00x20-18 PR (4 NOS.)
Clutch	Heavy duty, single, dry friction type hydraulic clutch.	Wheel Base	4300 mm
Top Speed	35 KMPH on even metaled Road (without load)	Wheel Track	1840 mm
Gradeability	40 % (unladen)	<b>SAFETY</b>	<ul style="list-style-type: none"> <li>● Hose failure protection</li> <li>● Audio over hoisting Indication</li> <li>● Safety brakes on hoist</li> <li>● Self-adjusting hook block</li> <li>● Front and rear wheel guards</li> </ul>
<b>STEERING</b>	Full power orbital with twin hydraulic double acting cylinders and 40° articulation on either side	<b>STANDARD EQUIPMENT</b>	<ul style="list-style-type: none"> <li>● Front Outriggers</li> <li>● ROPS fully enclosed wide view cabin</li> <li>● Rear View Camera</li> <li>● Front and rear work lights</li> <li>● Reflectors &amp; rear view mirrors</li> <li>● Tool Kit</li> <li>● Cabin fan</li> <li>● Wiper Motor</li> <li>● Beacon rotating light</li> <li>● Gauges :                             <ul style="list-style-type: none"> <li>a) Water Temperature.</li> <li>b) Engine Oil Pressure.</li> <li>c) Fuel Gauge</li> <li>d) RPM meter cum hour recorder</li> <li>e) Air Pressure Gauge</li> <li>f) Speedometer</li> </ul> </li> </ul>
Turning Radius	7.6 Mtrs. on outer rear wheels.	<b>OPTIONAL EQUIPMENT</b>	<ul style="list-style-type: none"> <li>● Flyjib (Max Capacity : 1.25 Tonnes)</li> <li>● Spark arrestor</li> <li>● Safe load indicator/ LMI</li> <li>● Over Hoist hydraulic cutoff</li> <li>● Fire Extinguisher</li> <li>● Drag Winch</li> <li>● Front and side Proximity Sensors</li> <li>● Cabin front glass protector</li> <li>● Helper/Slinger Seat</li> <li>● 3 part slotted boom -12.1 mtrs. height</li> </ul>
<b>BRAKES</b>	<ul style="list-style-type: none"> <li>● Dual Circuit Brakes</li> <li>● Fully Pneumatic brakes on front and rear wheels.</li> <li>● Parking brake is pneumatically operated, fail safe type</li> </ul>	<b>OPERATING WEIGHT</b>	
<b>HYDRAULIC SYSTEM</b>	<ul style="list-style-type: none"> <li>● Gear/Intra Vane type main pump</li> <li>● Five spools control valve with built in Relief Valve (Heavy duty)</li> <li>● Suction line has 100 mesh size strainer while return line is fitted with 25 micron full flow filter.</li> <li>● Two double acting lift cylinders, two double acting steering cylinders and one double acting extension cylinder.</li> </ul>	Front axle	9655 Kgs.
<b>TELESCOPIC BOOM</b>	4 part slotted boom, 2 part hydraulically operated & synchronized and 4th part power extended	Rear Axle	10200 Kgs.
<b>BOOM LUFFING Range</b>	-10° to + 65°	Total Weight	19855 Kgs.

# 4x4



**1 ROPS CABIN**  
Front mounted, ergonomically designed Cabin for better visibility and driveability.



**2 GROUND CLEARANCE**  
High ground clearance of 300mm for easier rough terrain operation.



**3 OUTRIGGERS**  
Front Outriggers for added safety during high lift operations.



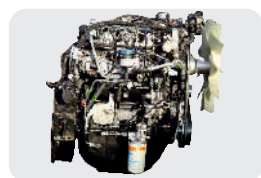
**4 OPTIMIZED KINEMATICS AND LOW C.G.**  
FE-210 crane has been designed keeping in mind operational safety parameters with low Center of Gravity (C.G.) providing best in class stability



**5 EASY MAINTENANCE**  
The engine is easily accessible for daily maintenance checks including battery, air filter, oil dipstick and cooling system

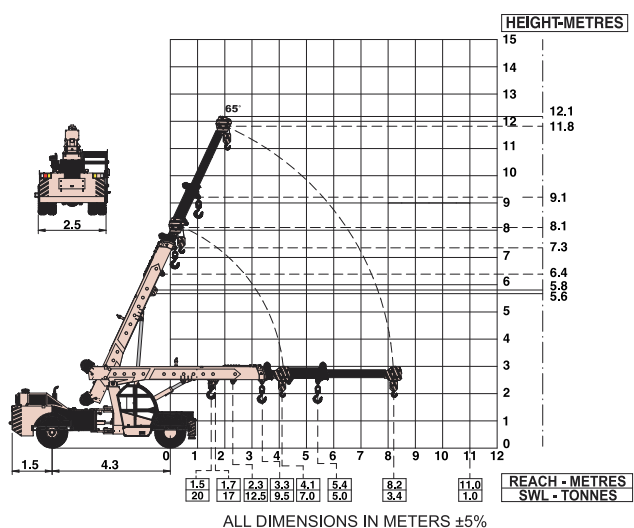


**6 INCREASED VISIBILITY**  
Bigger size front windscreen provides better visibility.



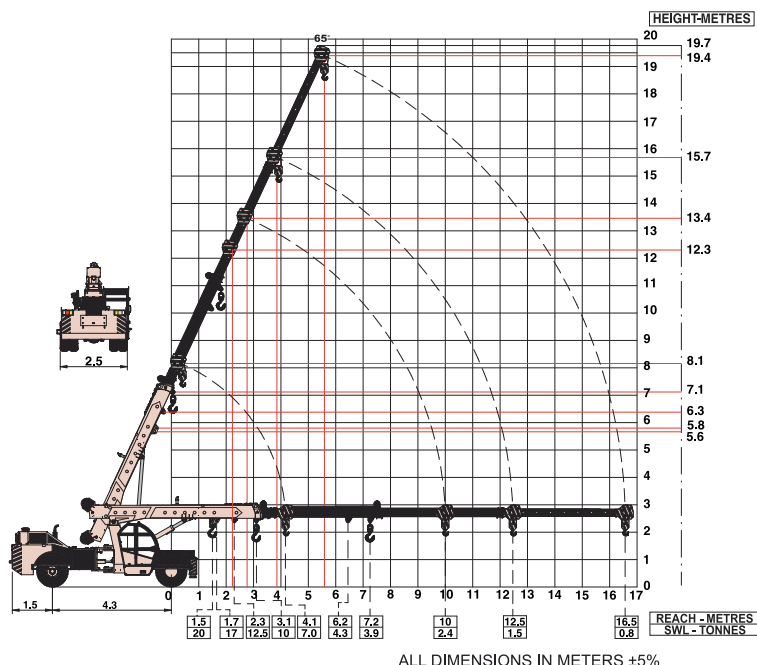
**7 ENGINE**  
Best in class TATA engine having nation wide service support and spare parts availability.

**FORMA FE210 Model Crane fitted with 3 part slotted boom (12.1 mtrs. height)**



**FORMA FE210 Model Crane fitted with 3 part slotted boom + 1 Manual (19.7 mtrs. height)**

- Max. Capacity Fly jib : 1.25 Tonnes
- Max. Capacity manual extension : 2.0 Tonnes



NOTE: • Rated loads are on the basis of operation on firm and level surface.  
• Full rated lifting capacity available in articulated / steered condition.

# NETWORK



# STRENGTH YOU CAN TRUST

**MARKETING H.Q.**  
Plot No. 7, 2nd Floor, L.S.C., Pocket - H Market,  
Sarita Vihar, New Delhi - 110076 India  
Phone: +91 9205687887  
E-mail: info@forma-international.com

**FORMA**  
**FC FORMA**

Contact:

