

FE 250

Nextgen Pick n Carry Mobile Crane

Unleashing Power,
Precision & Performance

4x4

All Terrain Capability



**Front
Outrigger**

For Working Stability



**Pick &
Carry**

Efficient Load movement



**Rough Terrain
Articulated**

Engineered for harsh job sites

4x4

All Wheel Drive

Superior traction & mobility

BUILT FOR DEMANDING ENVIRONMENTS.

Designed to conquer the toughest job sites, the **FE 250** delivers unmatched versatility and durability to maximize your operational efficiency in any terrain.

QR Code

Specifications

FE-250

LIFTING CAPACITY	25 Tonnes
ENGINE	Tata 101HP BS-III, Diesel Engine, Model 497, 4 cylinder, Water Cooled, Turbo Charged Engine
Rated Power	101 HP (74 kW) at 2200 RPM
TRANSMISSION	Heavy Duty Synchromesh Gearbox with 12 Forward and 2 reverse speeds. Auxiliary Gear Box with 2WD/4WD selector for High and Low speeds.
Axles	Front axle is rigidly mounted on the chassis. Rear drive axle is mounted with 2 nos. Leaf springs.
Drive	4 Wheel drive (4x4)
Clutch	Heavy duty, single, dry friction type pneumatic assisted hydraulic clutch.
Creep Speed	1.3 KMPH
Top Speed	38 KMPH on even metaled Road (without load)
Gradeability	40 % (unladen)
STEERING	Full power orbitrol with twin hydraulic double acting cylinders and 40° articulation on either side
Turning Radius	8.20 Mtrs. on outer rear wheels.
BRAKES	<ul style="list-style-type: none"> ● Dual Circuit Brakes Fully Pneumatic brakes on front and rear wheels. ● Parking brake is pneumatically operated, fail safe type
HYDRAULIC SYSTEM	<ul style="list-style-type: none"> ● Gear/Intra Vane type main pump ● Five spools control valve with built in Relief Valve (Heavy duty) ● Suction line has 100 mesh size strainer while return line is fitted with 25 micron filter. ● Two double acting lift cylinders, two double acting steering cylinders and one double acting extension cylinder.
TELESCOPIC BOOM	4 part slotted boom, 2 part hydraulically operated & synchronized and 4th part power extended
HOIST	4 Tonnes Line Pull Winch is driven by hydraulic motor and fitted with rope tensioner. Hoisting is provided through self adjusting hook block employing 6 falls of 13mm dia. Rope.
Hoist Speed	35 Mtrs./Min (Line Speed)
ELECTRICAL SYSTEM	12v, Negative Earth (110 AH Battery)

TYRES	
Front	12.00x24-20 PR (4 NOS.)
Rear	12.00x24-20 PR (4 NOS.)
Wheel Base	4930 mm
Wheel Track	1880 mm
SAFETY	<ul style="list-style-type: none"> ● Hose Failure Protection ● Audio Over hoisting Indication ● Safety Brakes on Hoist ● Self-Adjusting Hook Block ● Front and rear wheel guards
STANDARD EQUIPMENT	<ul style="list-style-type: none"> ● Front work lights ● Reflectors and rear view mirror ● Tool kit ● Cabin fan ● Wiper motor ● Digital Cluster with display indications for : <ul style="list-style-type: none"> a) Fuel Level b) Low Fuel c) Engine Oil Pressure d) Air Pressure e) Low Air Pressure f) Parking Brake g) Coolant Temperature h) Engine RPM i) Engine Hour Recorder j) Speedo Meter k) Odometer l) Neutral Position Safe Start m) 2W/4WD Drive ● Front Outriggers ● Beacon Rotating Light
OPTIONAL EQUIPMENT	<ul style="list-style-type: none"> ● Air Conditioned (AC) cabin ● SLI - Safe Load Indicator ● Fly jib (1.25 Tonnes Max. Capacity) ● Over Hoist hydraulic cutoff ● Fire extinguisher ● Cabin Front Glass Protector ● Helper / Slinger Seat ● Drag Winch ● Front & Side Proximity Sensors ● Man Basket Attachment
OPERATING WEIGHT	20800 Kgs.

FE 250



OPTIMIZED KINEMATICS AND LOW C.G.

F 250 crane has been designed for operational safety with low Center of Gravity (C.G.) providing best in class stability



AC CABIN



STEERING WHEEL & CONTROLS

Ergonomically placed operator console and instrument cluster ensures ease of operation.



OUT RIGGERS

Front outriggers for added safety during high lift operation.



INCREASED VISIBILITY

Bigger size front windscreen and re-routing of hoses provide much better front visibility.



GROUND CLEARANCE

High ground clearance of 300mm for easier rough terrain operation.



ELECTRONIC CLUSTER

Digital Electronic Cluster with advanced features.

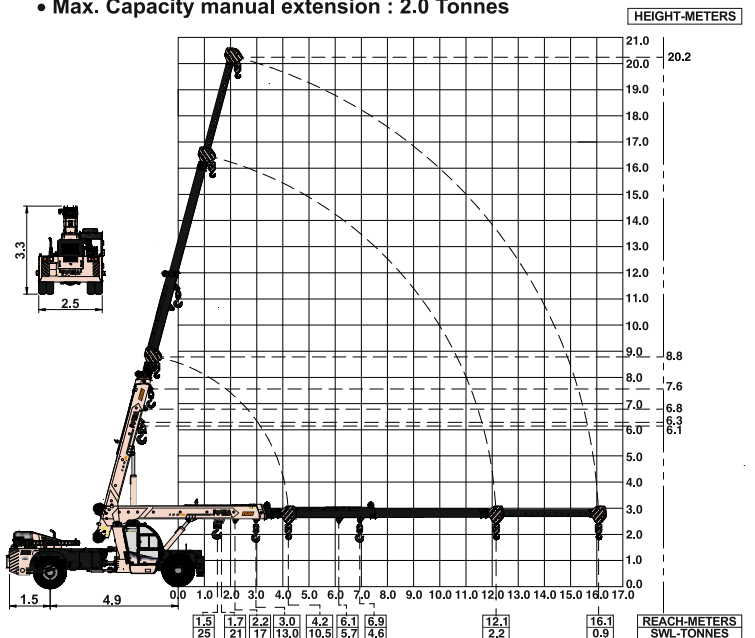


ENGINE

Tata, 101 HP BSIII Diesel Engine with nation wide service support and spares availability.

FORMA F250 Model Crane fitted with 3 part slotted boom + 1 Manual (20.2 mtrs. height)

- Max. Capacity Fly jib : 1.25 Tonnes
- Max. Capacity manual extension : 2.0 Tonnes



NOTE - SWL are based on 85% stability & strength.
 - Rated loads are on the basis of operation on firm and level surface.
 - Full rated lifting capacity available in articulated / steered condition.

NETWORK



STRENGTH YOU CAN TRUST

MARKETING H.Q.

Plot No. 7, 2nd Floor, L.S.C., Pocket - H Market,
Sarita Vihar, New Delhi - 110076 India
Phone: +91 9205687887
E-mail: info@forma-international.com

FORMA
FC FORMA

Contact:



FE250/05/26