

# FE 300

## Nextgen Pick n Carry Mobile Crane

Unleashing Power,  
Precision & Performance

# 4x4

All Terrain Capability



**Front  
Outrigger**

For Working Stability



**Pick &  
Carry**

Efficient Load movement



**Rough Terrain  
Articulated**

Engineered for harsh job sites

**4x4  
All Wheel Drive**

Superior traction & mobility

## BUILT FOR DEMANDING ENVIRONMENTS.

Designed to conquer the toughest job sites, the **FE 300** delivers unmatched versatility and durability to maximize your operational efficiency in any terrain.

QR Code

## Specifications

## FE-300

<b>LIFTING CAPACITY</b> (Free on wheels)	30 Tonnes
<b>ENGINE</b>	Ashok Leyland, CEV BS V, 4 Cylinder, Water Cooled, Diesel Engine, Model H4C413022 with Electronic Control Unit (ECV)
Rated Power	130 HP (95.6 kW) at 2200 RPM
<b>TRANSMISSION</b>	Heavy duty, Synchromesh with 12 forward and 2 reverse speeds and hi-low drive selector for creep speed
Axles	Front axle is rigidly mounted on the chassis and rear drive axle is mounted with 2 nos. heavy duty leaf springs
Clutch	Heavy duty hydraulic clutch
Top Speed	36 KMPH on even metalled road (without load)
Gradeability	36% (unladen)
<b>HYDRAULIC SYSTEM</b>	<ul style="list-style-type: none"> <li>● Gear/Intra Vane type Main Pump</li> <li>● Five spools control valve with built in Relief valve (Heavy Duty)</li> <li>● Suction line has 100 mesh size strainer while return line is fitted with 25 micron full flow filter.</li> <li>● Two double acting lift cylinders, two double acting steering cylinder, one double acting extension cylinder and two double acting outrigger cylinders</li> </ul>
<b>STEERING</b>	Full power orbitrol with twin hydraulic double acting cylinders and 40° articulation on either side.
Turning Radius	8.2 Meters (approx)
<b>TYRES</b>	
Front	12.00 x 24 - 20 PR (4 Nos.)
Rear	17.50 x 25 - 20 PR (2 Nos.)
Wheel base	5100 mm
Wheel track	Front 1900 mm Rear 1770 mm
<b>BRAKES</b>	<ul style="list-style-type: none"> <li>● Dual Circuit Brakes</li> <li>● Fully pneumatic brakes on front and rear wheels</li> <li>● Parking brake is pneumatically operated, fail safe type.</li> </ul>
<b>ELECTRICAL SYSTEM</b>	12 V Negative earth (130 Ah battery)
<b>TELESCOPIC BOOM</b>	Three part slotted boom with hydraulically operated synchronized extensions (11.4 mtrs. height)

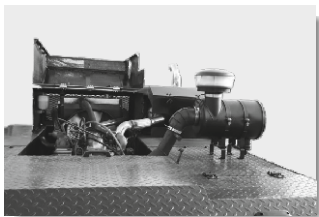
<b>HOIST</b>	Winch is driven by hydraulic motor and fitted with rope tensioner. Hoisting is provided through self adjusting hook block employing 6 falls of 13 mm dia steel core anti twist rope.
Hoist Speed	35 Mtrs./Min. (Line speed)
<b>BOOM LUFFING</b>	
Range	-3° to + 66°
<b>SAFETY</b>	<ul style="list-style-type: none"> <li>● Hose failure protection</li> <li>● Audio over hoisting indication</li> <li>● Safety brakes on hoist</li> <li>● Self adjusting hook block</li> <li>● Front and rear wheel guards</li> </ul>
<b>STANDARD EQUIPMENT</b>	<ul style="list-style-type: none"> <li>● Front Outriggers</li> <li>● Front mounted fully enclosed wide view cabin</li> <li>● Rear View Camera</li> <li>● Front and rear work lights</li> <li>● Reflectors &amp; Rear View Mirrors</li> <li>● Tool Kit</li> <li>● Cabin Fan</li> <li>● Beacon rotating light</li> <li>● Wiper Motor</li> <li>● Gauges: <ul style="list-style-type: none"> <li>a) Water temperature</li> <li>b) Engine oil pressure</li> <li>c) Fuel Gauge</li> <li>d) RPM meter cum hour recorder</li> <li>e) Air Pressure Gauge</li> <li>f) Speedometer</li> </ul> </li> </ul>
<b>OPTIONAL EQUIPMENT</b>	<ul style="list-style-type: none"> <li>● Fly Jib (1.25 Tonnes Max Capacity)</li> <li>● Safe load indicator/LMI</li> <li>● Over Hoist hydraulic cutoff</li> <li>● Fire Extinguisher</li> <li>● Drag winch</li> <li>● Front and side Proximity Sensors</li> <li>● 4 Part slotted boom (18.1 mtrs. height)</li> <li>● Cabin Front Glass Protector</li> <li>● Helper/Slinger Seat</li> </ul>
<b>OPERATING WEIGHT</b>	
Total Weight	20250 Kgs.

# FORMA



### INCREASED VISIBILITY

Bigger size front windscreen provided for better visibility and safe operation



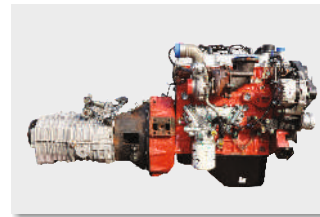
### EASY MAINTENANCE

The engine is easily accessible for daily maintenance checks including battery, air filter, oil level dipstick and cooling system.



### STEERING WHEEL & CONTROLS

Steering wheel is provided as a standard feature, which along with ergonomically placed operator console and instrument cluster ensures ease of operation



### ENGINE

Ashok leyland (CEV BSV), 4 cylinder water cooled diesel engine, model H4C5413022 with Electronic Control Unit (ECU)



### SLOTTED BOOM

Facilitates easier load positioning and fitted with self adjusting hook block.

### OPTIMIZED KINEMATICS AND LOW C.G.

FE 300 crane has been evolved/ designed keeping in mind operational safety parameters with low Center of Gravity (C.G.) providing best in class stability.



### CABIN

Front mounted, ergonomically designed Cabin for better visibility and driveability.



### DRAG WINCH

Optionally Drag Winch is available for pulling & tugging applications



### OUT TRIGGERS

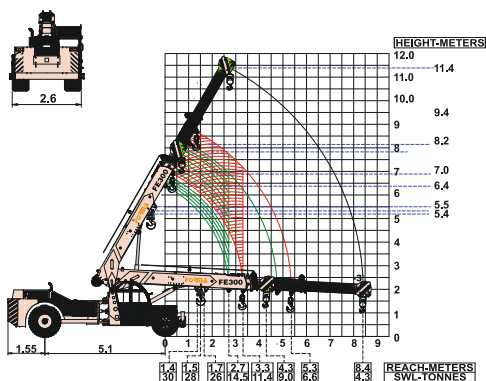
Front outriggers are provided as standard fitment for added safety during high lift operations.



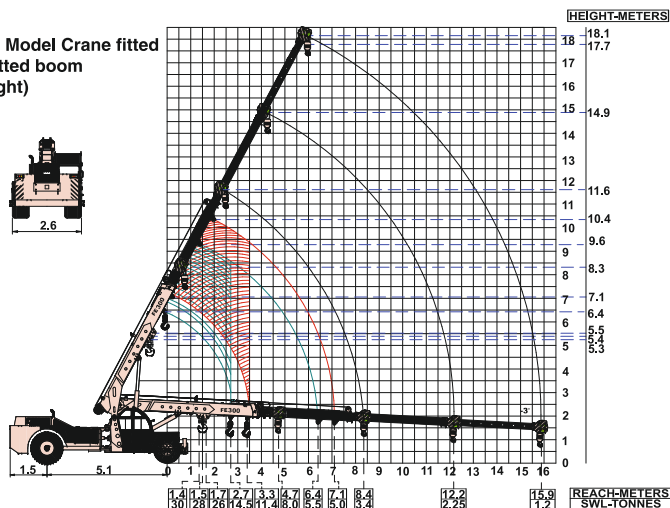
### GROUND CLEARANCE

Ground clearance of 300mm for easier rough terrain operation

FORMA FE300 Model Crane fitted with 3 part slotted boom (11.4 Mtrs. height)



FORMA FE300 Model Crane fitted with 4 part slotted boom (18.1 Mtrs. height)



DIMENSIONS IN METERS ±5%

DIMENSIONS IN METERS ±5%

# NETWORK



# STRENGTH YOU CAN TRUST

**MARKETING H.Q.**  
Plot No. 7, 2nd Floor, L.S.C., Pocket - H Market,  
Sarita Vihar, New Delhi - 110076 India  
Phone: +91 9205687887  
E-mail: info@forma-international.com

**FORMA**  
**FC FORMA**

Contact:

