

FE 150

Nextgen Pick n Carry Mobile Crane

Unleashing Power,
Precision & Performance

4x4

All Terrain Capability



**Front
Outrigger**

For Working Stability



**Pick &
Carry**

Efficient Load movement



**Rough Terrain
Articulated**

Engineered for harsh job sites

4x4

All Wheel Drive

Superior traction & mobility

BUILT FOR DEMANDING ENVIRONMENTS.

Designed to conquer the toughest job sites, the **FE 150** delivers unmatched versatility and durability to maximize your operational efficiency in any terrain.

QR Code

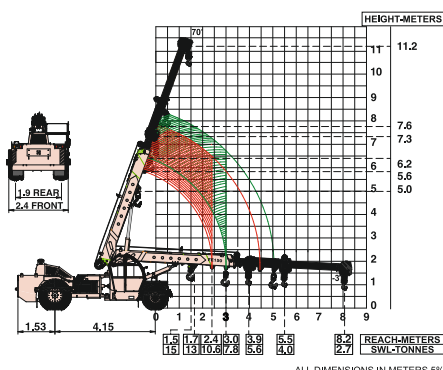
Specifications

FE150

LIFTING CAPACITY (Free on wheels)	15 Tonnes
ENGINE	TATA, 101 HP, BS-III, 4 cylinder, water cooled diesel engine, Model 497
Rated Power	55 HP (41 kW) at 2000 RPM
STEERING	Full power orbitrol with twin hydraulic double acting cylinders and 40° articulation on either side
Turning Radius	7 mtrs (approx)
TRANSMISSION	Heavy duty TATA synchromesh transmission with 10 forward and 2 reverse speeds and hi-low drive selector for creep speed
	Front axle is rigidly welded on the chassis and rear drive axle is mounted with leaf springs
	Heavy duty hydraulic clutch
Top Speed	35 KMPH on even metaled road (without load)
Gradeability	40% (unladen)
HYDRAULIC SYSTEM	<ul style="list-style-type: none"> ● Gear/Intra Vane type Main Pump ● Three spools control valve with built in Relief valve ● Suction line has 100 mesh size strainer while return line is fitted with 25 micron filter ● Two double acting lift cylinders, two double acting steering cylinders and one double acting extension cylinder
BRAKES	<ul style="list-style-type: none"> ● Dual Circuit Brakes ● Fully air actuated brakes on rear wheels and pneumatically assisted hydraulic brakes are provided on front wheels ● Parking brake is pneumatically operated, fail safe type
ELECTRICAL SYSTEM	12V. Negative earth with 35 amp. Alternator & 110 amp. hr. battery
TELESCOPIC BOOM	Three part slotted boom with hydraulically operated synchronized extensions
TYRES	11.00 x 20 (4 Nos.) 14.00 x 25 (2 Nos.)

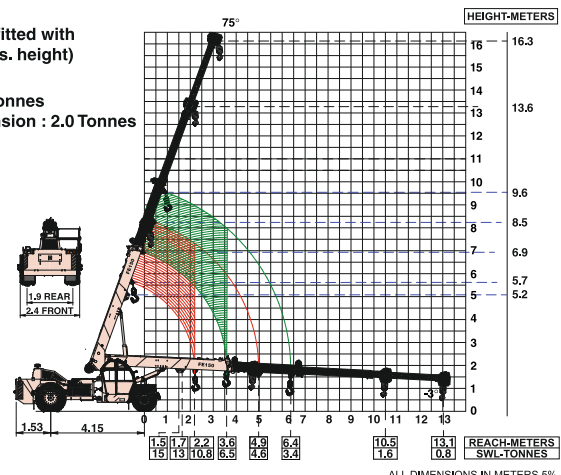
Wheel base	4150 mm
Wheel track	Front 1900 mm Rear 1800 mm
HOIST	Winch is driven by hydraulic motor and fitted with rope tensioner. Hoisting is provided through self adjusting hook block employing 4 falls of 13 mm dia rope
Hoist Speed	50 Mtrs./Min. (Line speed)
BOOM LUFFING Range	-3° to +75°
SAFETY	<ul style="list-style-type: none"> ● Hose failure protection ● Audio over hoisting indication ● Safety brakes on hoist ● Self adjusting hook block ● Front and rear wheel guards
STANDARD EQUIPMENT	<ul style="list-style-type: none"> ● Front mounted fully enclosed wide view cabin ● Rear View Camera ● Front work lights ● Beacon rotating light ● Reflectors & Rear View Mirrors ● Tool Kit ● Cabin Fan ● Instrument Cluster : <ul style="list-style-type: none"> a) Water temperature b) Engine oil pressure c) Fuel Gauge d) RPM meter cum hour recorder e) Air Pressure Gauge ● Speedometer
OPTIONAL EQUIPMENT	<ul style="list-style-type: none"> ● Fly jib : 2.7 Mtrs., 1.25 Tonnes Capacity ● Spark arrestor ● Safe load indicator/ LMI ● Over Hoist hydraulic cutoff ● Fire extinguisher ● Front outriggers ● Front and side Proximity Sensors ● Cabin front glass protector ● Helper/Slinger seat ● 4 part slotted boom (16.3 m) ● 4 part slotted boom (18.9 m)
OPERATING WEIGHT Total Weight	15220 Kgs.

FORMA FE150 Model Crane fitted with 3 part slotted boom (11.2 Mtrs. height)



FORMA FE150 Model Crane fitted with 4 part slotted boom (16.3 Mtrs. height) (4th part power extended)

- Max. capacity flyjib : 1.25 tonnes
- Max capacity manual extension : 2.0 Tonnes



Full rated lifting capacity available in articulated / steered condition.

Full rated lifting capacity available in articulated / steered condition.

NOTE: • All above specifications are pertaining to FE150 model fitted with 11.2 Mtrs. boom.
• Rated loads are on the basis of operation on firm and level surface.



CABIN

Front mounted, ergonomically designed Cabin for better visibility and driveability.



OPTIMIZED KINEMATICS AND LOW C.G.

FE150 crane has been designed with low Center of Gravity (C.G.) providing best in class stability and operational safety



EASY MAINTENANCE

The engine is easily accessible for daily maintenance checks including battery, air filter, oil level and cooling system



SLOTTED BOOM

Facilitates easier load positioning and is fitted with self adjusting hook block.



INCREASED VISIBILITY

Bigger size front windscreen provided for better visibility and safe operation.



GROUND CLEARANCE

Ground clearance of 350mm for easier rough terrain operation.



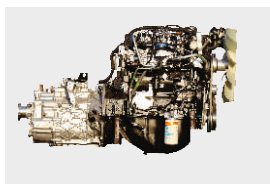
ANALOG CLUSTER

Analog Cluster with advanced features.



STEERING WHEEL & CONTROLS

Ergonomically placed operator console and instrument cluster ensures ease of operation.



ENGINE

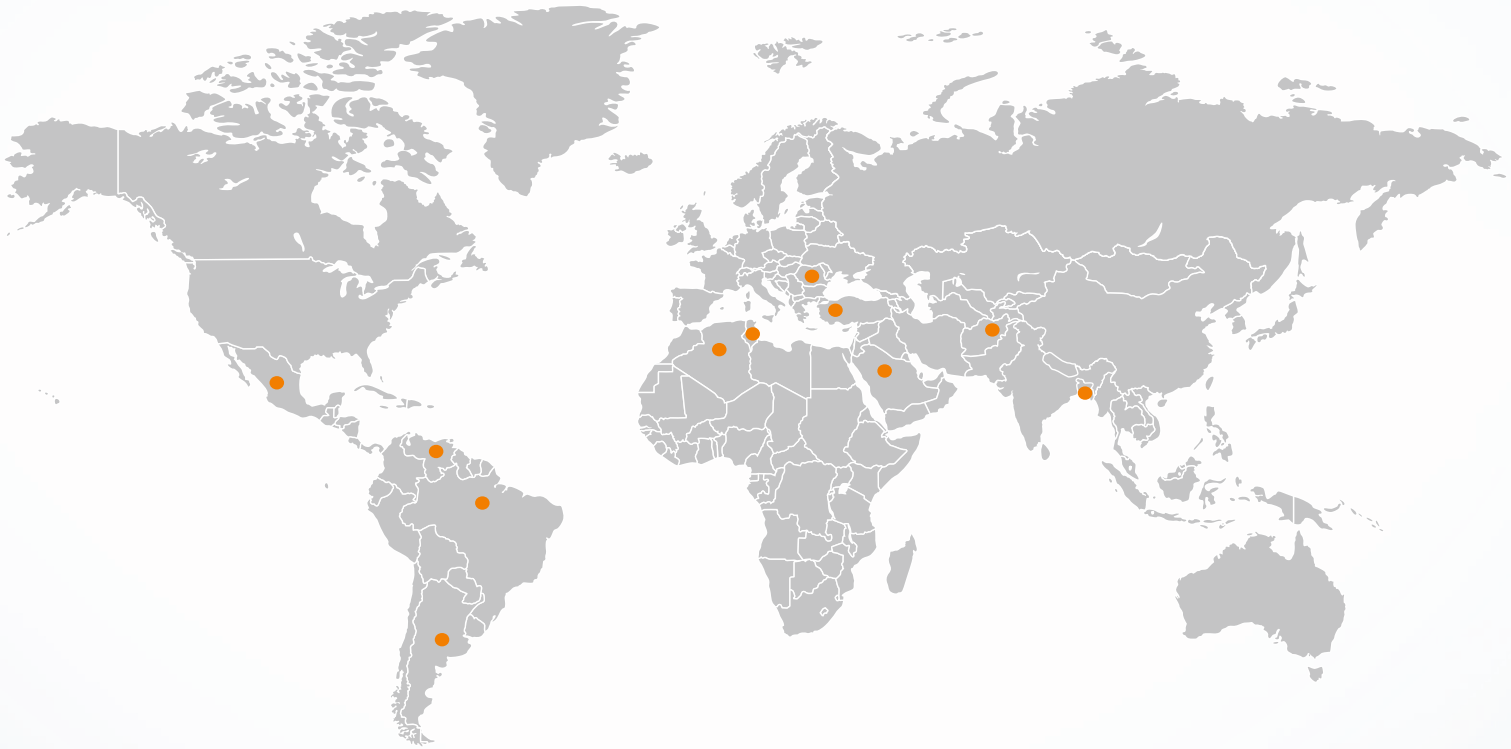
Tata Motors 101HP (CEV BSIII) Diesel Engine Model 497 with nation wide service support and spares availability



FRONT OUTRIGGERS

Optional Front Outriggers for added safety during heavy & high lift operations.

NETWORK



STRENGTH YOU CAN TRUST

MARKETING H.Q.
Plot No. 7, 2nd Floor, L.S.C., Pocket - H Market,
Sarita Vihar, New Delhi - 110076 India
Phone: +91 9205687887
E-mail: info@forma-international.com

FORMA
FC FORMA

Contact:

