

# FETC 800

## Truck Mounted Crane

Unleashing Power,  
Precision & Performance


**8x4**  
All Terrain Capability



**Outrigger**  
For Working Stability



**360° Slew**  
360° Rotation  
360° Rotation

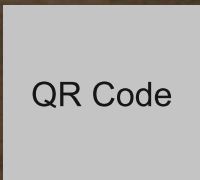


**Superior Stability**  
Engineered for harsh job sites

**8x4**  
4 Wheel Drive & 4 Wheel Steer  
Superior traction & mobility

## BUILT FOR DEMANDING ENVIRONMENTS.

Designed to conquer the toughest job sites, the **FETC 800** delivers unmatched versatility and durability to maximize your operational efficiency in any terrain.

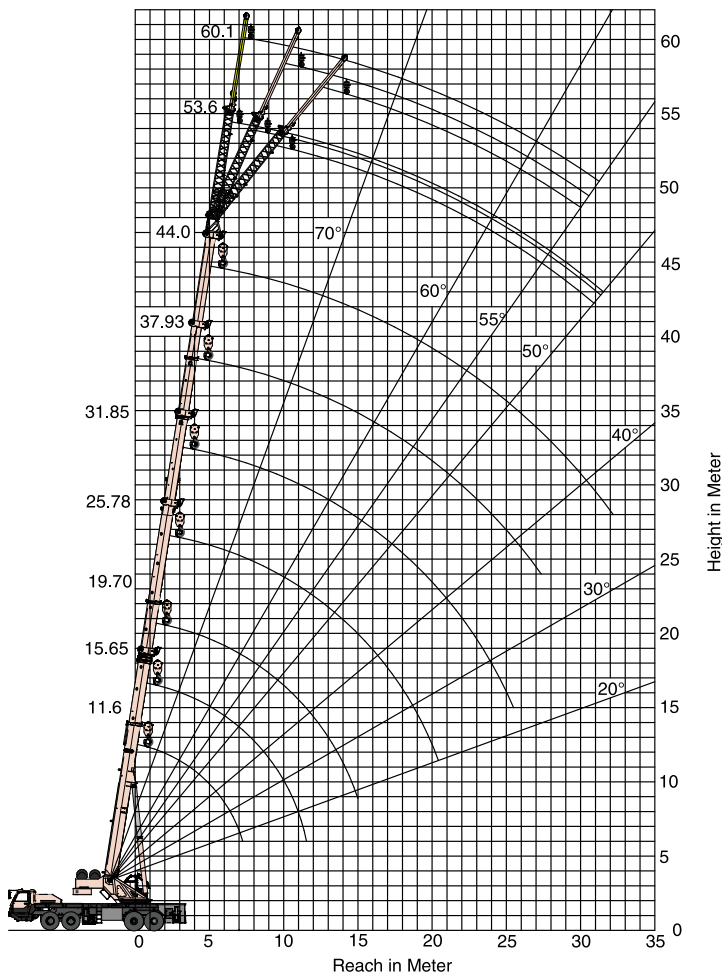


# FETC 800

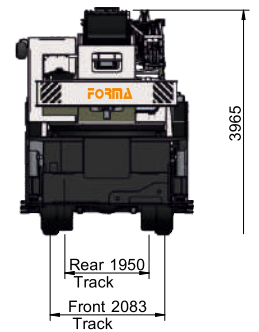
80 Tons



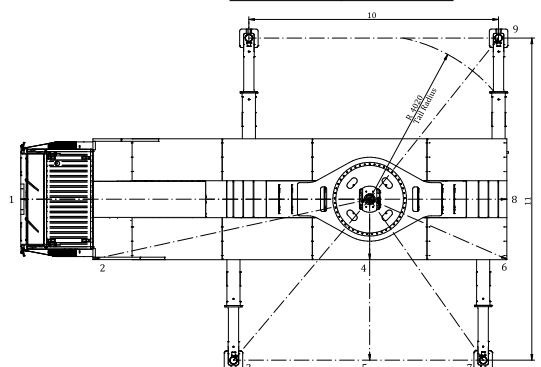
## Lifting Height / Working Range Diagram



## Dimensions



Jib Position	Deduction
X	Meter
1	8.52
2	6.90
3	5.15
4	1.48
5	3.80
6	3.60
7	4.80
8	3.35
9	5.04
10	6.10
11	7.60



# Specifications

# FETC800

<b>Crane Chassis</b>	<ul style="list-style-type: none"> <li>Torsion proof chassis fabricated from high tensile steel plates. Outrigger boxes are integrated with the chassis.</li> <li>Drive is 8x4x4 (4 wheel drive and 4 wheel steer)</li> <li>Full width driver cabin is provided with driver and co-driver seating arrangements.</li> </ul>
<b>Engine</b>	Mahindra Power or suitable, turbo charged, inter cooled diesel BS V engine developing 274 BHP @ 2200 rpm
<b>Clutch</b>	Single plate (395 mm), Dry, hydraulic actuated diaphragm type
<b>Transmission</b>	Nine speed synchromesh gear box with crawler gear and one speed reverse gear
<b>Top Speed</b>	49 Kmph.
<b>Brakes</b>	Air pressurized diaphragm operated with dual line arrangement. Flick valves operated pneumatic hand brake on rear and service brake for all wheels
<b>Tyre Size</b>	12.00 X 24-16 ply rating(12+1 Nos.)
<b>Outrigger</b>	Four hydraulic operated outrigger beams with vertical hydraulic jack fitted with lock valves. Outrigger shoes are removable and stowable. Fifth outrigger jack also provided below the cabin
<b>Hydraulic System</b>	High pressure triple pump driven by transmission P.T.O, supplies oil to all circuits except steering system.
<b>Super Structure</b>	Fabricated with high tensile steel plates and is capable of unlimited slewing in either direction. Super structure is mounted on a sealed internal teeth slew ring.
<b>Boom Derricking</b>	Double acting hydraulic cylinder with counter balance safety valve.
<b>Slewing</b>	Piston type hydraulic motor drives a pinion through reduction gear unit. Double counter balance valve is provided for smooth control of operations.
<b>Telescopic Boom</b>	Five U section boom fabricated from high tensile plates. Extend length from 11.6M to 44.0M by twin double acting hydraulic cylinder. Counter Balance valve has been provided for both cylinders for safety and lifted load.

<b>Hoist System</b>	Hoist winch has been provided with piston type hydraulic motor driving grooved hoist barrel via reduction gear unit. The system is fitted with counter balance valve to control the speed of lowering and to hold the lifted load.																				
<b>Hook Block</b>	6 sheaves hook block is provided																				
<b>Hoist Rope</b>	20 mm diameter.																				
<b>Capacities</b>	<table border="0"> <tr> <td>Hydraulic Tank</td> <td>850 Lts.</td> </tr> <tr> <td>Fuel Tank</td> <td>335 Lts.</td> </tr> </table>	Hydraulic Tank	850 Lts.	Fuel Tank	335 Lts.																
Hydraulic Tank	850 Lts.																				
Fuel Tank	335 Lts.																				
<b>Operator's Cabin (Crane)</b>	Cabin with Panoramic view is fitted. Joy stick controls for crane motion and electrical controls are provided in the cabin. Cabin is fitted with fan and lights.																				
<b>Safety Equipment</b>	<ul style="list-style-type: none"> <li>Safe load indicator provides radius and hook load indication with visual indication of approach to overload and audible indication of over load condition.</li> <li>Overload and Over hoist cut-off.</li> <li>Pressure relief in main circuit.</li> <li>Pilot operated check valve is provided in all the load lifting and jack cylinders.</li> </ul>																				
<b>Performance Data</b>	<table border="0"> <tr> <td>• Derrick Angle</td> <td>-2<sup>o</sup> to 80<sup>o</sup></td> </tr> <tr> <td>• Derricking time</td> <td>50-80 secs (In &amp; out)</td> </tr> <tr> <td>• Telescoping time</td> <td>150 secs</td> </tr> <tr> <td>• Slew</td> <td>0-2 RPM</td> </tr> <tr> <td>• Hoist</td> <td>Single line speed 90 m/min.</td> </tr> <tr> <td>• Outriggers</td> <td></td> </tr> <tr> <td>    Out</td> <td>34 secs</td> </tr> <tr> <td>    In</td> <td>26 secs</td> </tr> <tr> <td>    Down</td> <td>30 secs</td> </tr> <tr> <td>    Up</td> <td>38 secs</td> </tr> </table>	• Derrick Angle	-2 <sup>o</sup> to 80 <sup>o</sup>	• Derricking time	50-80 secs (In & out)	• Telescoping time	150 secs	• Slew	0-2 RPM	• Hoist	Single line speed 90 m/min.	• Outriggers		Out	34 secs	In	26 secs	Down	30 secs	Up	38 secs
• Derrick Angle	-2 <sup>o</sup> to 80 <sup>o</sup>																				
• Derricking time	50-80 secs (In & out)																				
• Telescoping time	150 secs																				
• Slew	0-2 RPM																				
• Hoist	Single line speed 90 m/min.																				
• Outriggers																					
Out	34 secs																				
In	26 secs																				
Down	30 secs																				
Up	38 secs																				
<b>Axle loads</b>	<table border="0"> <tr> <td>Front axle-1</td> <td>9893 kgs.</td> </tr> <tr> <td>Front axle-2</td> <td>9917 kgs.</td> </tr> <tr> <td>Rear axles</td> <td>28237 kgs.</td> </tr> <tr> <td>Total weight</td> <td>48047 kgs.</td> </tr> </table>	Front axle-1	9893 kgs.	Front axle-2	9917 kgs.	Rear axles	28237 kgs.	Total weight	48047 kgs.												
Front axle-1	9893 kgs.																				
Front axle-2	9917 kgs.																				
Rear axles	28237 kgs.																				
Total weight	48047 kgs.																				
<b>Optional Equipment</b>	Side folding lattice jib - 9 to 16.0 mtrs with three offset positions.																				

## Rated Lifting Capacity ( in Kgs. ) 85% Rating

## FETC800

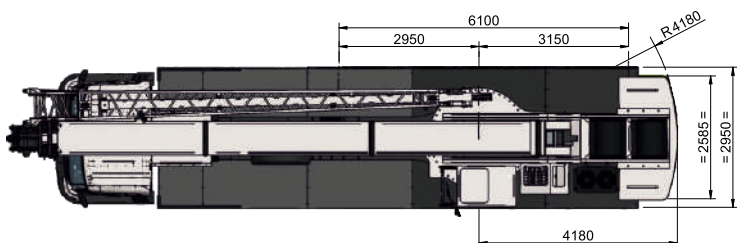
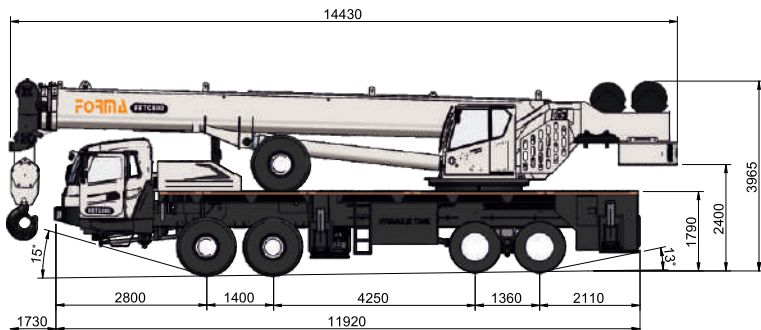
Radius in Meter (M)	360° BLOCKED						
	Jib Closed 11.6M	Jib Extended 15.65M	Jib Extended 19.70M	Jib Extended 28.78M	Jib Extended 31.85M	Jib Extended 37.93 M	Jib Extended 44.0M
3.0	80000	54100	43050				
3.5	70000	53000	43050	28500			
4.0	61800	51000	42000	28500			
4.5	55100	47000	40500	28500	19000		
5.0	51000	44400	38300	27400	19000		
5.5	45700	41000	36000	26500	18500		
6.0	41700	38500	34000	25400	18500	15000	
6.5	38200	34800	31500	24500	18500	14500	
7.0	33000	30100	28700	23500	18000	14500	10000
7.5	28200	26000	25400	22500	18000	14000	10000
8.0	25000	23500	22500	21500	17500	14000	9800
9.0	20200	19100	19000	19000	16500	13500	9800
10.0		16000	15500	15500	15000	13000	9500
11.0		14000	13000	13000	13500	12000	9500
12.0		11000	11000	11000	12000	11000	9000
14.0			8050	8500	9000	9500	8000
16.0			5900	6200	7000	7400	7000
18.0				5000	5800	5500	5900
20.0				3600	4500	4500	4600
22.0					3500	3500	3800
24.0					2500	2500	3000
26.0					2000	2000	2300
28.0						1500	1800
30.0						1200	1600
32.0							1200

1. The above capacities are in accordance with Indian Standard Code - IS:4573-1982.

2. Rated loads do not exceed 85% of tipping load at rated radius. The loads shown are gross loads and the weight of the hook block, slings, lifting tackle etc. must be considered as part of the rated load.

3. Outrigger's to be deployed in fully extended and jacked position on firm & rigid leveled surface.

### Overall Dimensions



### Capacity with Fly Jib (Kgs.)

Elevation of Main Boom	Main Boom + Jib (Kgs)					
	Installation of Jib 44.0M+9.6M			Installation of Jib 44.0M+16.1m		
	0°	15°	30°	0°	15°	30°
80°	3800	2700	2400	2500	1400	1100
75°	3600	2500	2300	2100	1250	1040
72°	3200	2300	2200	1800	1150	990
70°	2900	2200	1900	1700	1100	950
65°	2400	2000	1900	1400	950	880
60°	1850	1800	1600	1200	900	830
55°	1250	1200	1100	900	800	750
50°	750	700	650	800	550	500

## Mobile Cranes (9-180 Tonnes)



**Tractors**

## Vibratory Rollers



**Backhoe Loader**



**Motor Grader**

# NETWORK



# STRENGTH YOU CAN TRUST

**MARKETING H.Q.**  
Plot No. 7, 2nd Floor, L.S.C., Pocket - H Market,  
Sarita Vihar, New Delhi - 110076 India  
Phone: +91 9205687887  
E-mail: [info@forma-international.com](mailto:info@forma-international.com)



Contact:

