

NETWORK



STRENGTH YOU CAN TRUST

MARKETING H.O.
 Plot No. 7, 2nd Floor, L.S.C., Pocket - H Market,
 Sarita Vihar, New Delhi - 110076 India
 Phone: +91 9205687887
 E-mail: info@forma-international.com

FORMA
FC Forma

Contact:



FORMA
 EUROPEAN HERITAGE

F Series
 RELIABLE • DEPENDABLE • EFFICIENT

FEX360°

**Next-Gen 360
 Multi Activity Crane**

Combination of Power,
 Precision & Performance

4x4
 All Terrain Capability



360° Slew
 360° Rotation

Pick & Carry
 Efficient Load movement

Rough Terrain Articulated
 Engineered for harsh job sites

4x4 All Wheel Drive
 Superior traction & mobility

BUILT FOR DEMANDING ENVIRONMENTS.

Designed to conquer the toughest job sites, the **FEX 360°** delivers unmatched versatility and durability to maximize your operational efficiency in any terrain.

QR Code

FORMA
 EUROPEAN HERITAGE

Toll Free Number: 1800-1800-004

Dealer Contact :
www.forma-international.com

FORMA

Mobile Cranes (9-180 Tonnes)



Tractors



Vibratory Rollers



Backhoe Loader



Motor Grader

Specifications

FEX 360°

MAX LIFTING CAPACITY	20 Tonnes
ENGINE	Ashok Leyland (BS III) Diesel Engine Model 497TC60, 4 Cylinder, Water Cooled Turbo Charged Engine
Rated Power	101 HP at 2200 RPM
TRANSMISSION	Heavy duty, synchromesh with 8 forward and 2 reverse speeds and hi-low drive selector for creep speed
Axles	Front Drive axle is rigidly mounted on the chassis. Rear drive axle is mounted with 2 nos. Leaf springs.
Drive	4 Wheel drive.
Clutch	Heavy duty, single, dry friction type hydraulic clutch.
Top Speed	38 KMPH on even metaled Road (without load)
Gradeability	40 % (unladen)
STEERING	Full power orbital with twin hydraulic double acting cylinders and 40° articulation on either side
Turning Radius	7.6 Mtrs. on outer rear wheels.
BRAKES	<ul style="list-style-type: none"> Dual Circuit Brakes Fully Pneumatic brakes on front and rear wheels. Parking brake is pneumatically operated, fail safe type
HYDRAULIC SYSTEM	<ul style="list-style-type: none"> Gear type tandem pump Four spools for crane operation. Seven spools for outrigger operation. Suction line has 100 mesh size strainer while return line is fitted with 25 micron full flow filter.

SUPER STRUCTURE	Super structure is capable of continuous slewing in either direction and mounted with sealed slew bearing.
OUTRIGGERS	
Front outriggers	Hydraulically operated telescopic outrigger beams with vertical hydraulic jacks fitted with safety lock valve.
Rear outriggers	Hydraulically operated swing and telescopic outrigger beams with vertical hydraulic jacks fitted with safety lock valve.
SLEWING	Hydraulic motor fitted with counter balance valve providing 360° continuous slew
BOOM DERRICKING	Two double acting hydraulic cylinders with counter balance safety valve
BOOM LUFFING	
Range	-2° to + 64°
TELESCOPIC BOOM	<ul style="list-style-type: none"> 4 section boom with 2 sections hydraulically operated & synchronized and 4th section power extended Double acting hydraulic cylinder with counter balance safety valve is provided for boom telescoping
HOIST	Winch is driven by hydraulic motor and fitted with rope tensioner. Hoisting is provided through self adjusting hook block employing 6 falls of 13mm dia. Rope.
Hoist Speed	40 Mtrs./Min (Line Speed)
ELECTRICAL SYSTEM	12v, Negative earth.

Specifications

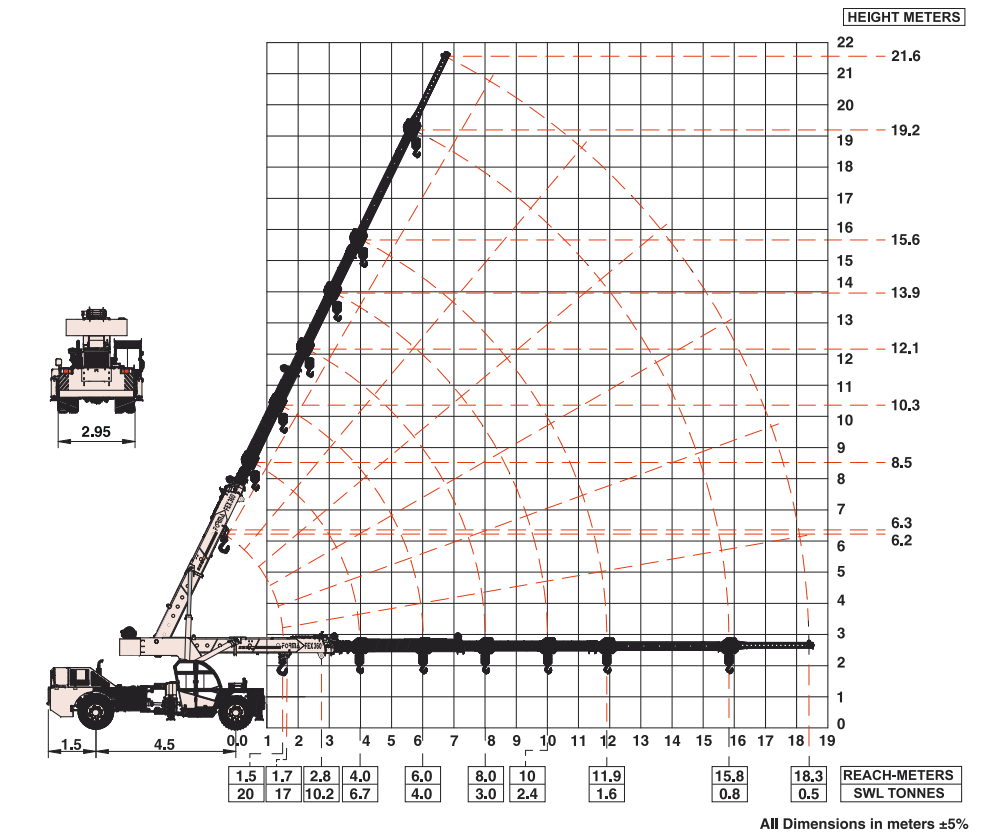
FEX 360°

TYRES	
Front	12.00x20-18 PR (4 NOS.)
Rear	12.00x20-18 PR (4 NOS.)
SAFETY	<ul style="list-style-type: none"> Safe load indicator with cutoff Hose failure protection Audio over hoisting Indication with cut off Safety brakes on hoist Self-adjusting hook block Rear wheel guards
OPTIONAL EQUIPMENT	<ul style="list-style-type: none"> Flyjib (Max Capacity : 1.25 Tonnes) Spark arrester Fire Extinguisher Front and side Proximity Sensors Cabin front glass protector

STANDARD EQUIPMENT	<ul style="list-style-type: none"> ROPS fully enclosed wide view cabin Front work lights Reflectors and rear view mirror Tool kit Cabin fan Wiper motor Instrument Cluster :- <ul style="list-style-type: none"> a) Fuel level gauge b) Air pressure gauge c) Oil pressure gauge d) Coolant temp e) Engine RPM f) Speedometer g) Odo meter h) Engine Hour Recorder Rear view camera Front Outriggers Beacon Rotating Light
OPERATING WEIGHT	
Front axle	10200 Kgs.
Rear Axle	10200 Kgs.
Total Weight	20400 Kgs.

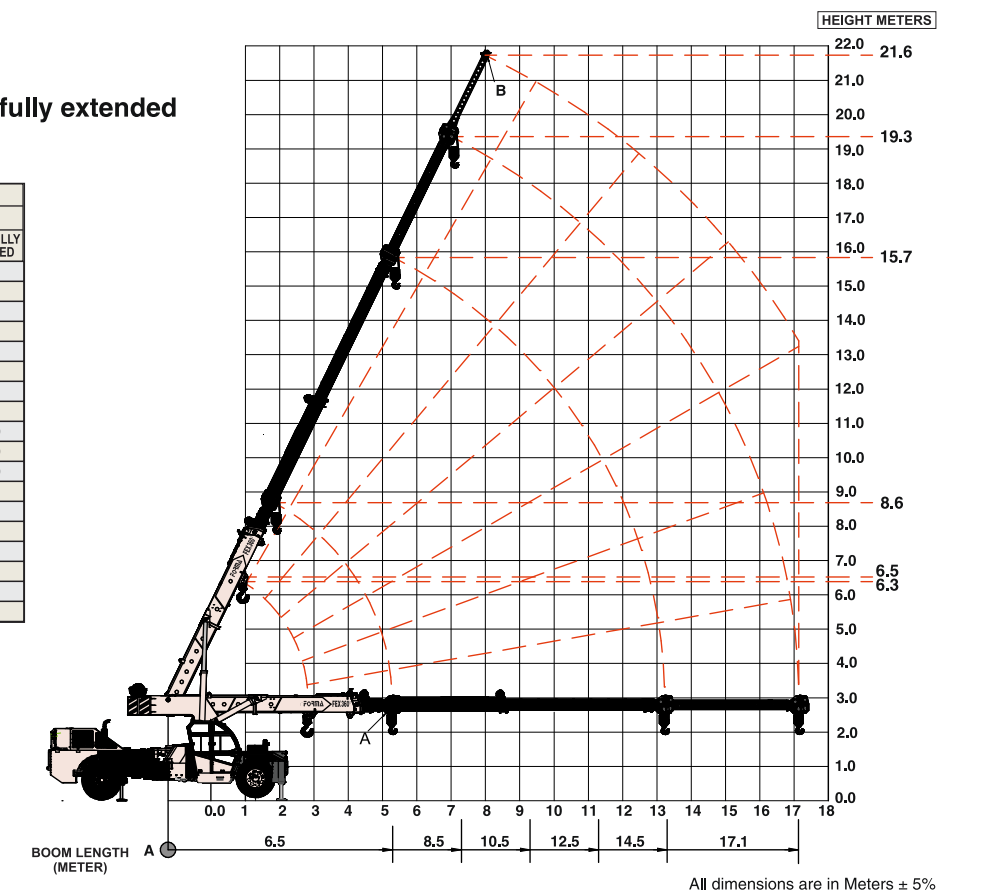
MULTI ACTIVITY CRANE

- Load Chart : Pick 'N' Carry Duty (Tonnes)
- Max. Capacity Fly Jib : 1.25 Tonnes
 - Max. Capacity Manual Extension : 2.0 Tonnes



- Load Chart : Slew Duty (Kgs)
- Outriggers : Fully swung out and fully extended
 - Slewing Range : 360° Continuous

SLEW RADIUS (M)	BOOM LENGTH IN METERS					
	HOOK BLOCK (A)				FLY JIB	
	MANUAL EXT. CLOSED		MANUAL EXT. OPEN		BOOM FULLY EXTENDED	
2.5	18000	9000				
2.8	16000	9000				
3.0	14000	9000				
4.0	10500	9000				
5.0	7500	7250	7100	7000		
6.0	5800	5600	5400	5300		
7.0	4100	4100	4000	4000	2000	
8.0		3800	3800	3600	1800	1250
9.0		2700	2700	2600	1600	1200
10.0			2000	2000	1200	1000
11.0			1800	1800	1100	900
12.0				1400	1100	800
13.0				1200	1000	700
14.0					1000	700
15.0					800	600
16.0					700	600
17.0					600	500



NOTE:

- Lifting capacities for supported operation only on firm level ground.
- SWL are based on 85% stability as per IS: 4573.
- Lifting capacity = Actual load + Chain/Slings.



FEX 360°

